

CLEAR
LED™

WALL

About ClearLED

ClearLED displays are trusted by leading brands around the globe to get you noticed. This unique display solution is sleek, lightweight, and modular. It offers second-to-none brightness, up to 93% transparency for daylight filtering, and creative versatility to meet every need—whether indoor, outdoor, flat, curved, or cylindrical—from window-size posters up to giant custom wall installations. ClearLED is designed to deliver high impact and unbeatable return on investment.

Contact us today to find
out how to get noticed.

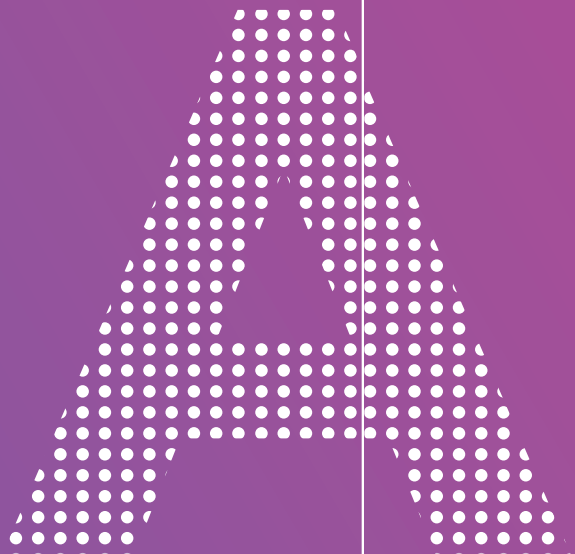
TF +1 888 533 8853

USA +1 949 793 5330

CAN +1 778 373 5701

info@clearled.com

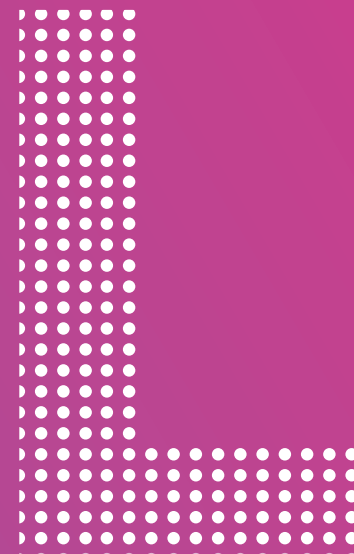
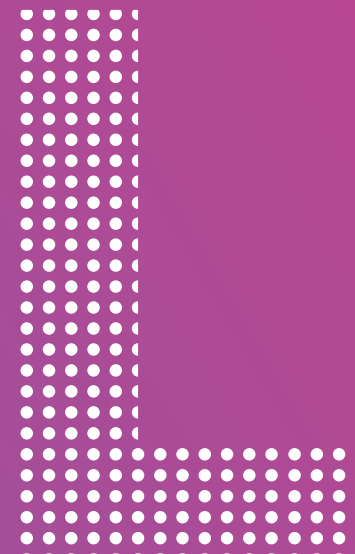
clearled.com



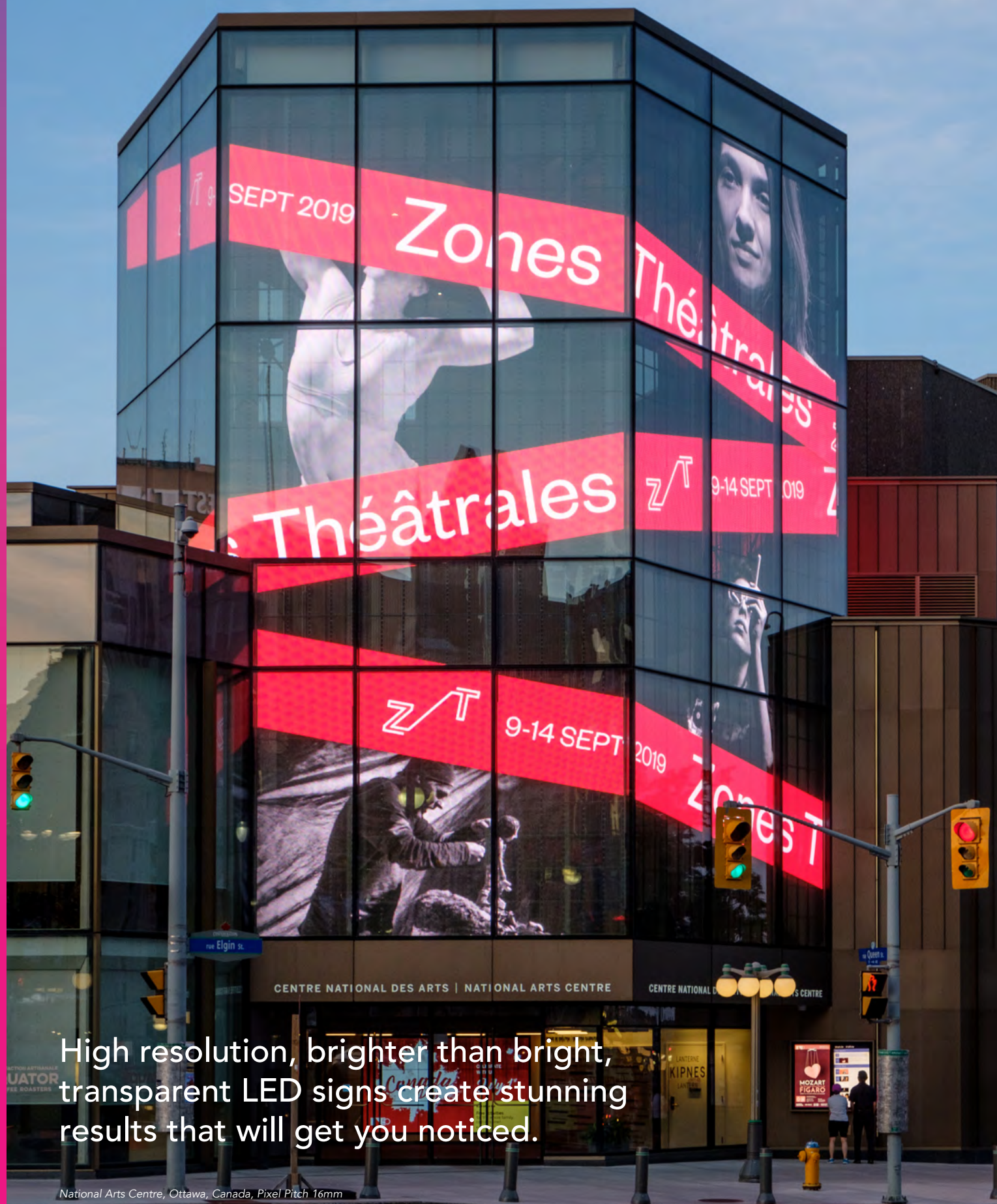
GET NOTICED



CLEAR
LED™



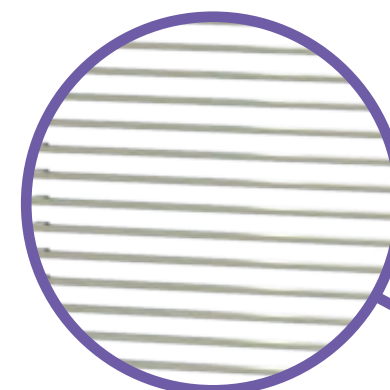
GET NOTICED



High resolution, brighter than bright, transparent LED signs create stunning results that will get you noticed.

National Arts Centre, Ottawa, Canada, Pixel Pitch 16mm

Reap the benefits of transparent ClearLED Wall



See the difference transparency makes

ClearLED Wall allows natural sunlight to filter in for a pleasant indoor shopping experience, while outdoor passers-by can see in.



Brighter than bright—see it from further away

With up to 6000nits in brightness, ClearLED Wall series displays are visible 24/7, even in bright daylight, and beat traditional signs, non-transparent LED displays, projectors, and LCD signs.



Modular design—build the size you need

ClearLED Wall displays come in standard size modules and can be used to create small, medium, large, and even extra-large LED screens—there are no size limitations.



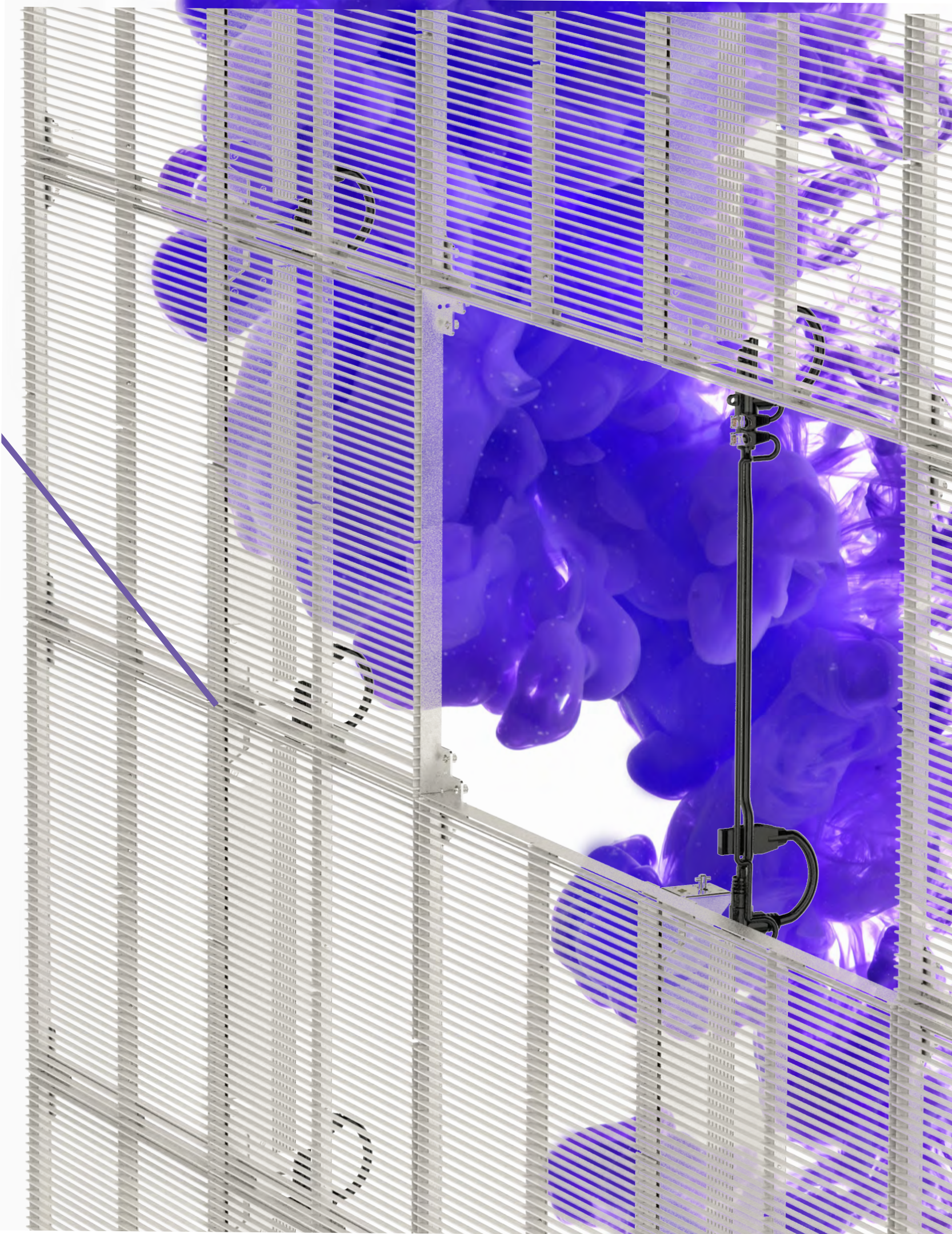
Unbeatable pixel pitch—the highest density for the highest resolution

Our super high-density pixel pitch means sharper, more attractive, and noticeable imagery on your transparent display screen.



Outstanding appearance—simple and sleek

ClearLED Wall transparent LED display modules take up the minimum of space—frames are simple, lightweight, and elegantly constructed, making your displays clean and unobtrusive.



National Arts Centre | Ottawa, Canada

Size	Main glass building: 3340 square ft Outdoor light blades: 595 square ft
Pixel Pitch	Main glass building: 16 x 16mm Outdoor light blades: 6 x 6mm
Brightness	8000 nits
Transparency	>93%



Mango, Barcelona, Spain, Pixel Pitch 10mm

Wow your audience with high-impact world-class transparent LED displays

The Wall series transparent LED display is a highly versatile system that is trusted by leading brands. ClearLED Wall is used to create highly impressive and attention-getting displays on the world stage.

◀ **Mango | Barcelona, Spain**

Pixel Pitch	10mm
Brightness	6000 nits
Transparency	75%



Blue-shine financial, North Vancouver, BC, Canada, Pixel Pitch 5x8mm



Feadship Royal Dutch Shipyards, Singapore, Pixel Pitch 8mm

◀ **Feadship Royal Dutch Shipyards | Singapore**

Size	8640mm x 2560mm 340.16" x 100.79"
Pixel Pitch	8mm
Brightness	6000 nits
Transparency	80%



Customized LED display Curved & Cylinder

Fully customizable to meet your precise needs

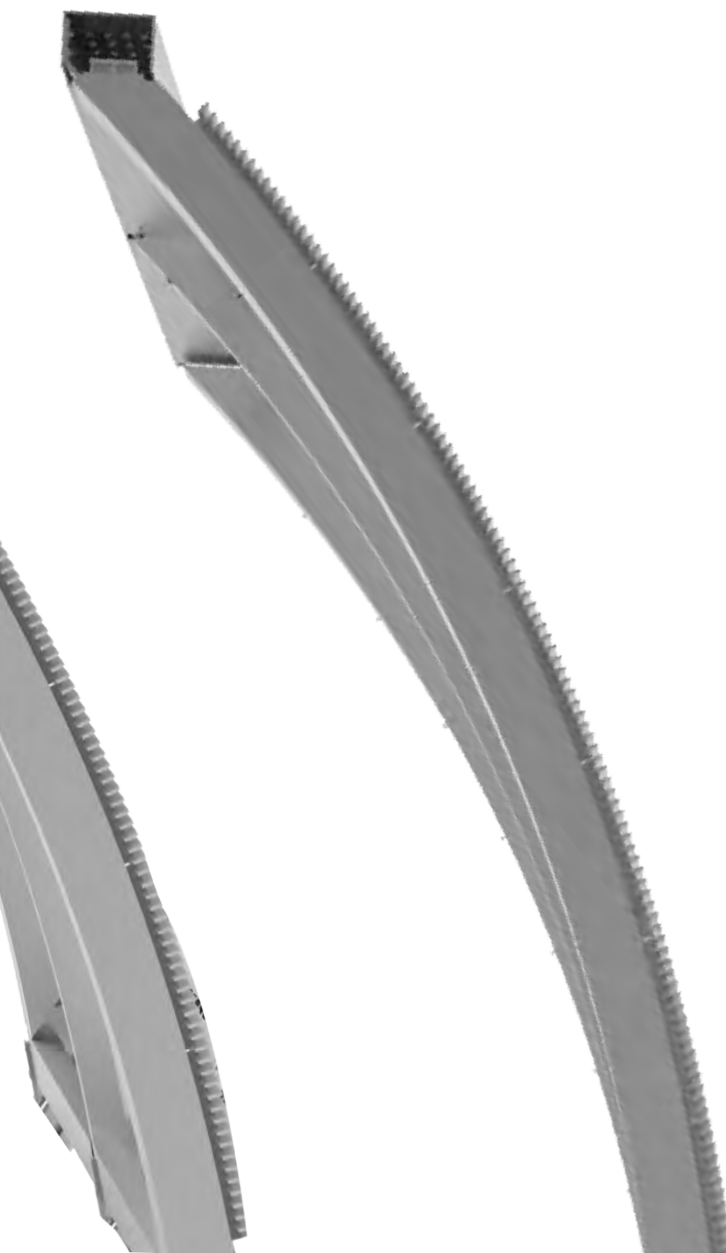
The ClearLED Wall series can be customized to meet the exact degree of curve your display calls for. ClearLED Curved panels are pre-designed and consist of either multiple panels that clip together to form a tall curve or one single large curved panel. The series is carefully designed at the ClearLED manufacturing plant and shipped pre-formed.

Customized LED display cylinders

ClearLED Cylinders are custom built to any diameter or height. Create a stunning showroom centerpiece, elevator wrap, or cylindrical sky-scraper to generate attention with high transparency. Each cylinder is formed by four lightweight quarter curves and carefully designed and built to your specifications at our manufacturing plant and shipped preformed.

Technically superior

ClearLED Curved and ClearLED Cylinder series is highly transparent, exceedingly bright, offers pixel pitch from 3.91x7.81mm to 7.81x7.81mm, and is easy to assemble. Light strips are easy to replace when needed and its frames are lightweight for easy transportation.





ClearLED Wall fits the bill for a variety of installations and makes an unforgettable statement

Highly customizable, this indoor transparent LED series can be designed to create memorable displays. Ideal for permanent and semi-permanent displays, including store-fronts, concert displays, entertainment venues, national landmarks, and trade shows, ClearLED Wall can be customized to fit your indoor architecture, no matter the size, from small displays to giant transparent LED video screens and even overhead canopies.

Perfectly engineered with modular benefit

Created for high-profile installations, ClearLED Wall is a lightweight, modular system. It is easy to install and delivers extraordinary brightness and high resolution. Power supplies and receiving cards are built into the modules, and power cables are easy to connect.

Best-in-class transparent video walls

ClearLED Wall's unique transparency, up to 93%, allows daylight sunlight to filter through, creating a natural interior atmosphere while still delivering attractive, get-noticed digital video on the front of the display. This makes ClearLED particularly attractive for store-front installations, allowing natural light to filter into the store and simultaneously deliver bright, get-noticed images and messaging to street-side traffic.

Disney Gift Shop | Shanghai, China

Pixel Pitch	7.81mm
Brightness	4000 nits
Transparency	68%

Shanghai Arch Walk | Shanghai, China ▶

Pixel Pitch	10mm
Brightness	6000 nits
Transparency	75%



Stand-alone or integrate with ClearLED Wall

The ClearLED Curved and Cylinder series can be used to create a highly unique and innovative transparent display based on curved panels. The Curved series can also be integrated into a ClearLED Wall or Cylinder system to create a high-impact display.

ClearLED Curved for a shapely display

The Curved series transparent LED display is fully customizable to form a convex or concave arch. Curved panels are pre-engineered and manufactured to meet the exact degree of curve for your display and shipped pre-formed. Highly transparent, lightweight, and exceedingly bright, ClearLED Curved will make your brand stand out from the crowd.

Unique ClearLED Cylinder exhibits

The Cylinder series is a superior transparent LED display that can be custom designed to form a unique cylinder shaped display to add pizzazz to your exhibit. Each cylinder is formed by four lightweight quarter curves and is custom built to any diameter or height, delivers high transparency, and unbeatable brightness. ClearLED Cylinder provides an excellent lightweight centerpiece exhibit.

Control Systems



MCTRL660

- No PC required for LED display configuration.
- LED display brightness adjustable directly with knob.
- 12-bit / 10-bit HDMI input, DVI input.
- HDMI / DVI output, for cascading or monitoring.
- HDMI / external audio unput.
- HDCP Blu-Ray input.
- Resolutions supported: (8-bit)
2048×1152@60Hz,
1920×1200@60Hz,
2560× 960@60Hz.
- Resolutions supported: (12-bit / 10-bit)
1440×900@60Hz.
- Customized resolution supported:
maximum width / height up to 3840 pixels.
- Cascading supported.
- Video formats: RGB, YCrCb 4:2:2, YCrCb 4:4:4.
- Independent power supply.
- 19 * 1.5U standard cabinet.



MCTRL660

- 12-bit / 10-bit HDMI input, DVI input.
- HDMI / external audio input.
- HDCP Blu-Ray input.
- Resolutions supported: (8-bit)
2048×1152@60Hz,
1920×1200@60Hz,
2560× 960@60Hz.
Customized resolution supported, maximum width/
height up to 3840 pixels.
- 1 light sensor interface, for auto brightness
adjustment.
- Cascading supported.
- Video formats: RGB, YCrCb 4:2:2, YCrCb 4:4:4.
- Certification: CE, RoHS, FCC, EAC, IC.

Other Accessories



MSD300/MCTRL300

- 1 DVI input.
- External audio input.
- 2 RJ45 for data output, hot backup supported.
- USB control interface, cascading supported.
- Resolutions supported:
1280×1024@60Hz,
1024×1200@60Hz,
1600× 848@60Hz,
1920× 712@60Hz,
2048× 668@60Hz,
customized resolution with maximum width/height
up to 3840 pixels.
- 1 light sensor interface, for auto brightness
adjustment.
- MSD 300 Certifications: CE, RoHS



Receiving Card



CAT6 Cable



DVI Cable



HDMI Cable



Polycarbonate Cover
(Optional)



Aluminum Powder Coating
(Optional)

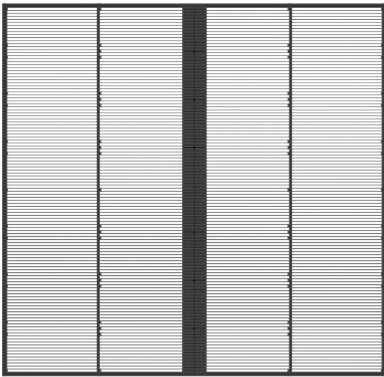


Flight Case
(Optional)

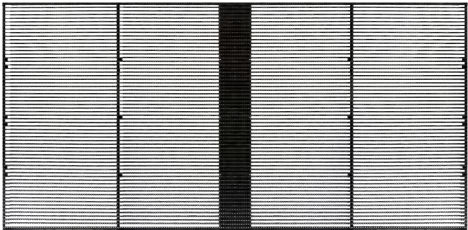


USB Cable

SPECIFICATIONS



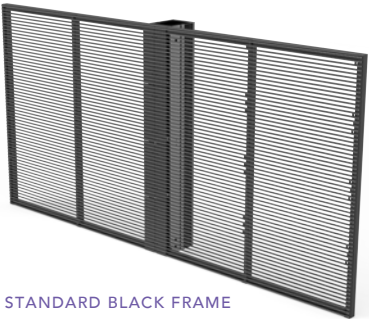
1000X1000MM PANEL SIZE



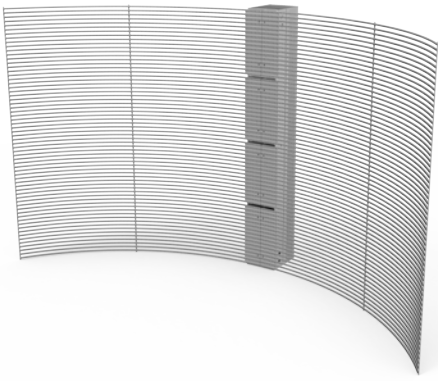
1000X500MM PANEL SIZE



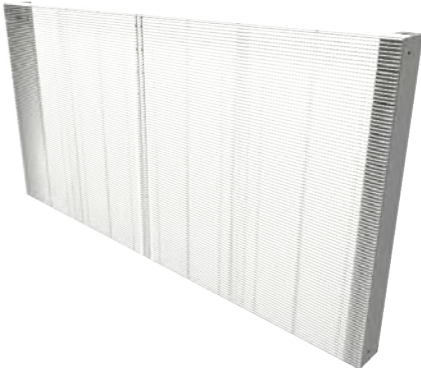
STANDARD SILVER FRAME



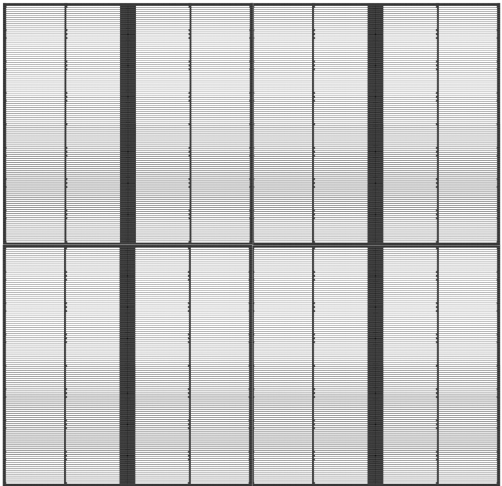
STANDARD BLACK FRAME



SOFT LED MODUEL OPTION



OTHER FRAME DESIGN OPTION



MULTIPLE MODULES

Model	W1.9	W3	W3.9	W5	W7.8	W10	W10H	Model	W16L	W16H	W20L	W20H	W25L	W25H	
Panel Size * The depth of the ClearLED Wall module with power supply is 90mm/3.5” deep	W x H x D* 1000mm x 500mm x 30mm 1000mm x 1000mm x 30mm							Module Size * The depth of the ClearLED Wall module with power supply is 70mm/2.7” deep	W x H x D* 1000mm x 500mm x 30mm 39.37” x 19.685” x 2.7”		W x H x D* 1000mm x 1000mm x 30mm 39.37” x 39.37”x 1.18”	W x H x D* 1000mm x 500mm x 30mm 39.37” x 19.685” x 1.18”	W x H x D* 1000mm x 1000mm x 30mm 39.37” x 39.37” x 1.18”	W x H x D* 1000mm x 500mm x 30mm 39.37” x 19.685” x 1.18”	
Weight	16 kgs/m² 35.27 lbs/m²	16 kgs/m² 35.27 lbs/m²	16 kgs/m² 35.27 lbs/m²	15 kgs/m² 33 lbs/m²	14 kgs/m² 30 lbs/m²	13 kgs/m² 28.67 lbs/m²		Weight	12 kgs/m² 26.46 lbs/m²		11 kgs/m² 24.25 lbs/m²		10 kgs/m² 22.05 lbs/m²		
Pixel Pitch (mm)	1.9x3.1	3.13x 3.13	3.9 x 3.9	5.2x5.25	7.81x7.81	10.4x10.4		Pixel Pitch (mm)	15.6x15.6		20x20		25x25		
Brightness (nits)	3,000	3,000	6,000 - 10,000	6,000	5500 - 10,000	3,000	60,000 - 10,000	Brightness (nits)	4000	6000	2800	4500	2000	2800	
Transparency (%)	>64	>73	>76	>73	>81	>84	>60	Transparency (%)	>92	>87	>91		>93		
Module Resolution (pixel)	526 x 128	320 x 160	256 x 64	192 x 96	128 X 64	100 x 50		Module Resolution (pixel)	64 x 32		48 x 48	48 x 24	40 x 40	40 x 20	
Resolution (dot/m²)	64,512	102,400	32,768	35,026	16,384	9,216		Resolution (dot/m²)	4,096		2,304		1,600		
Ingress Protection	IP20							Ingress Protection	IP20						
Refresh Rate (Hz)	3840							Refresh Rate (Hz)	3840						
Viewing Angle	120° / 120°							Viewing Angle	120°						
Minimum Viewing Distance	>1 m >3’	>3 m >10’	>5 m >16’	>6.5m >21.4’	>9.8m >32.0’	>13.0m >42.7’		Minimum Viewing Distance	19.5m 64.0’		25.0m 82.0’		31.2m 102.5’		
Life Time (hours)	100,000							Life Time (hours)	100,000						
Video Signal Input Interface	HDMI / DVI							Video Signal Input Interface	HDMI / DVI						
Working Temperature Range	-10 to +40 °C 32.18 to 104 F							Working Temperature Range	-10 to +40 °C 32.18 to 104 F						
Minimum Power Consumption (watts/module)	208	208	208	208	200	200		Minimum Power Consumption (watts/module)	100	200	135		135		
Average Power Consumption (watts/module)	580	550	530	510	440	430		Average Power Consumption (watts/module)	120	400	360		360		
Maximum Power Consumption (watts/module)	800	800	800	800	800	800		Maximum Power Consumption (watts/module)	400	800	400		400		
System Configuration	NovaStar							System Configuration	NovaStar						

Trusted brands who used ClearLED products







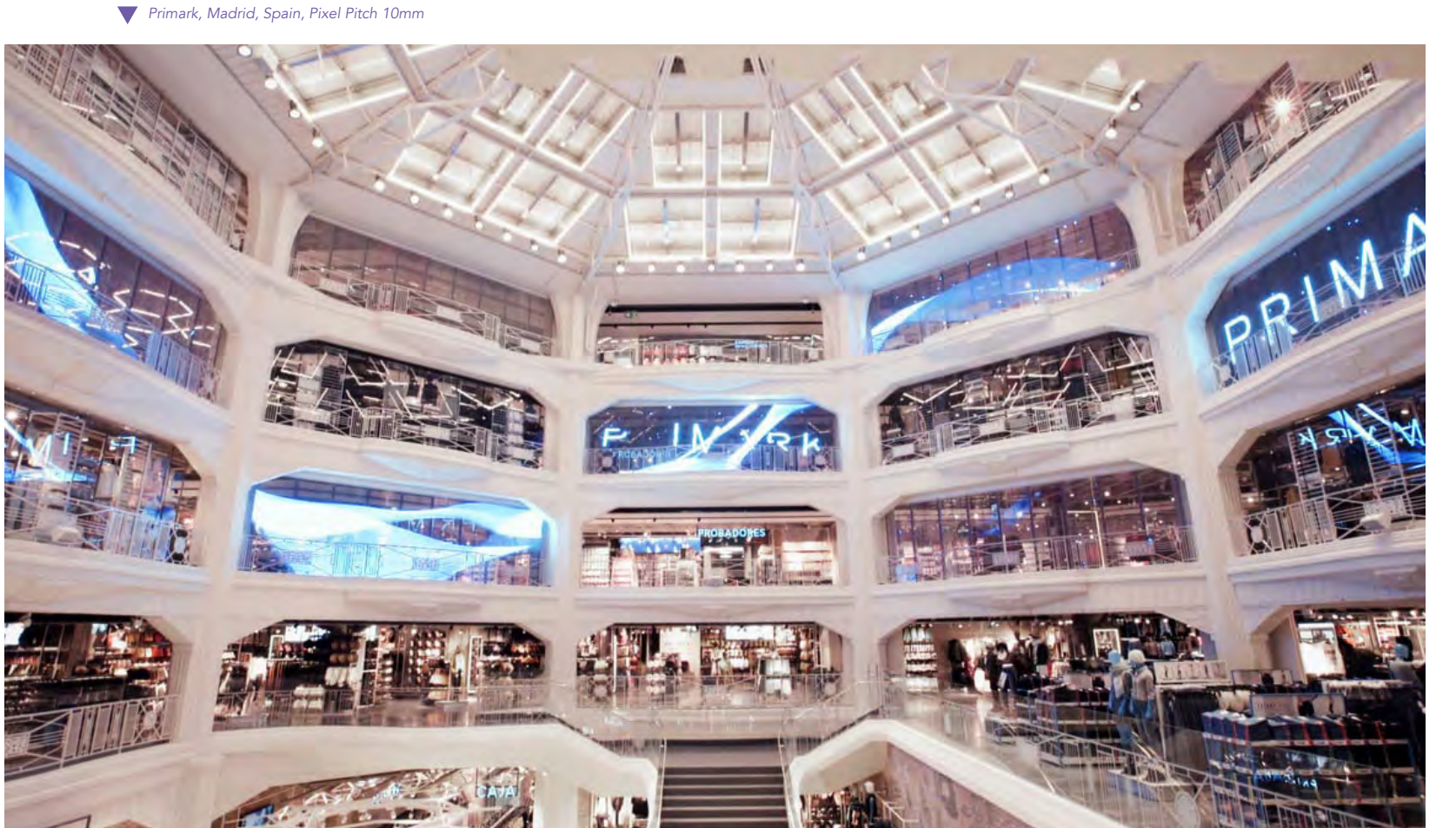








▲ Blue Shore Financial, North Vancouver, BC, Canada, Pixel Pitch 5x8mm



▼ Primark, Madrid, Spain, Pixel Pitch 10mm



▲ Land Rover, Hong Kong, Pixel Pitch 8mm

◀ Zara, Hong Kong, Pixel Pitch 10mm

▼ Lush, Vancouver, Canada, Pixel Pitch 10mm

